

# Presentation

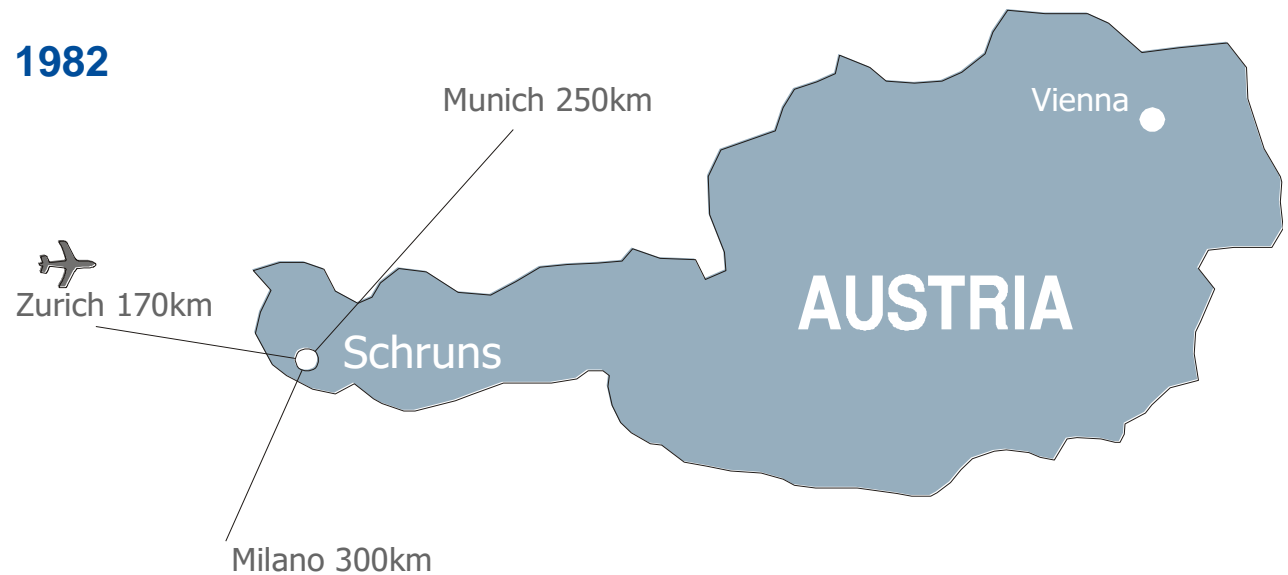
# ABC

» Presented by: Ahmad Hawa

## We Organise Companies



- ▶ **Headquarter: Schruns/Austria**
- ▶ **Foundation: 1982**



**GANTNER is a leading high-tech company developing and producing innovative multi-application system solutions based on RFID technology. These solutions are used worldwide for increasing security, efficiency and convenience, access control and cashless payment.**

## Individual Solutions with a System



**Everything with one card.**



## Access Control Online



### Controlling access

Identifying by chip,  
card and/or  
fingerprint

Secure staff  
and buildings

Log transactions

Open interfaces

## Gantner Access Makes Independent

- ▶ **Functional shaping and modern design**
- ▶ **Components with plug & play function**
- ▶ **New product line with fast processor technology and highest level of data safety**
- ▶ **Continuous product line covering online access control, offline access cylinders, locker locks, time recording units and cashless payments.**



## Access Solutions- Operation





## Main Entrances





## Overview



## Controlling Access

### GAT Reader SR300

- ▶ LEGIC® advant reader technology
- ▶ Connection to the terminal via RS 485 bus
- ▶ Mounting possible without electronics
- ▶ Plug&Play commissioning
- ▶ Clear signalling via LED bar
- ▶ Lit reading point
- ▶ Possible mounting on metal surfaces
- ▶ Also available as GAT SR 305 with IP 65



## Controlling Access

### GAT Reader SR310

- ▶ LEGIC® advant reader technology
- ▶ Connection to the terminal via RS 485 bus
- ▶ Mounting possible without electronics
- ▶ Plug&Play commissioning
- ▶ Lit PIN code pad
- ▶ Lit functional keys for controlling alarm systems and time recording
- ▶ Possible mounting on metal surfaces
- ▶ Also available as GAT SR 315 with IP 65



## Controlling Access

### GAT Reader SLR300

- ▶ Clear signalling via LED bars
- ▶ Lit reader point
- ▶ Optimised for mounting in tubular frame doors
- ▶ Smooth, rounded shapes so that no one gets caught, e.g. in the event of the installation of turnstiles
- ▶ Connection to the terminal via an RS 485 bus
- ▶ Easiest installation with pluggable clamps
- ▶ Plug&Play commissioning
- ▶ Possibility to mount on metal surfaces
- ▶ Water resistant IP54
- ▶ Highly shock resistant





## Controlling Access

### **GAT Reader SR345**

- ▶ Flush mounted reader for access control
- ▶ Same functions as GAT SR300
- ▶ Front aluminium cover or, at an additional cost, in a chrome steel design
- ▶ For installation in wood, drywall, metal, plastic, etc.
- ▶ Flush box, for installation in brickwork, available as accessory
- ▶ Protection class IP 65
- ▶ Also available as GAT SR 347 with IP 67



## Controlling Access- Biometric Identification

### **GAT Fingerscan FR055**

- ▶ Fingerprint expansion for access reader
- ▶ Combinable with GAT SR 30x and GAT SR 31x
- ▶ Optical surface sensor with 500 dpi
- ▶ Maximum user convenience
- ▶ Authentication time max. 1.2 seconds
- ▶ In combination with the GAT Terminal 3100:  
25,000 persons + 100,000 finger templates
- ▶ Optional sun and weather protective cover  
for the fingerprint sensor
- ▶ Identification via fingerprint for 500  
persons in preparation



GAT FR 055 with GAT SR 300 and SR 310

# Organise Access - Battery-Operated Solutions



**Organise access**

**Retrofit existing  
doors with ease**

**No cabling**

**Networking via WiNET®  
or CardNET®**

**Suitable for emergency  
exit routes**

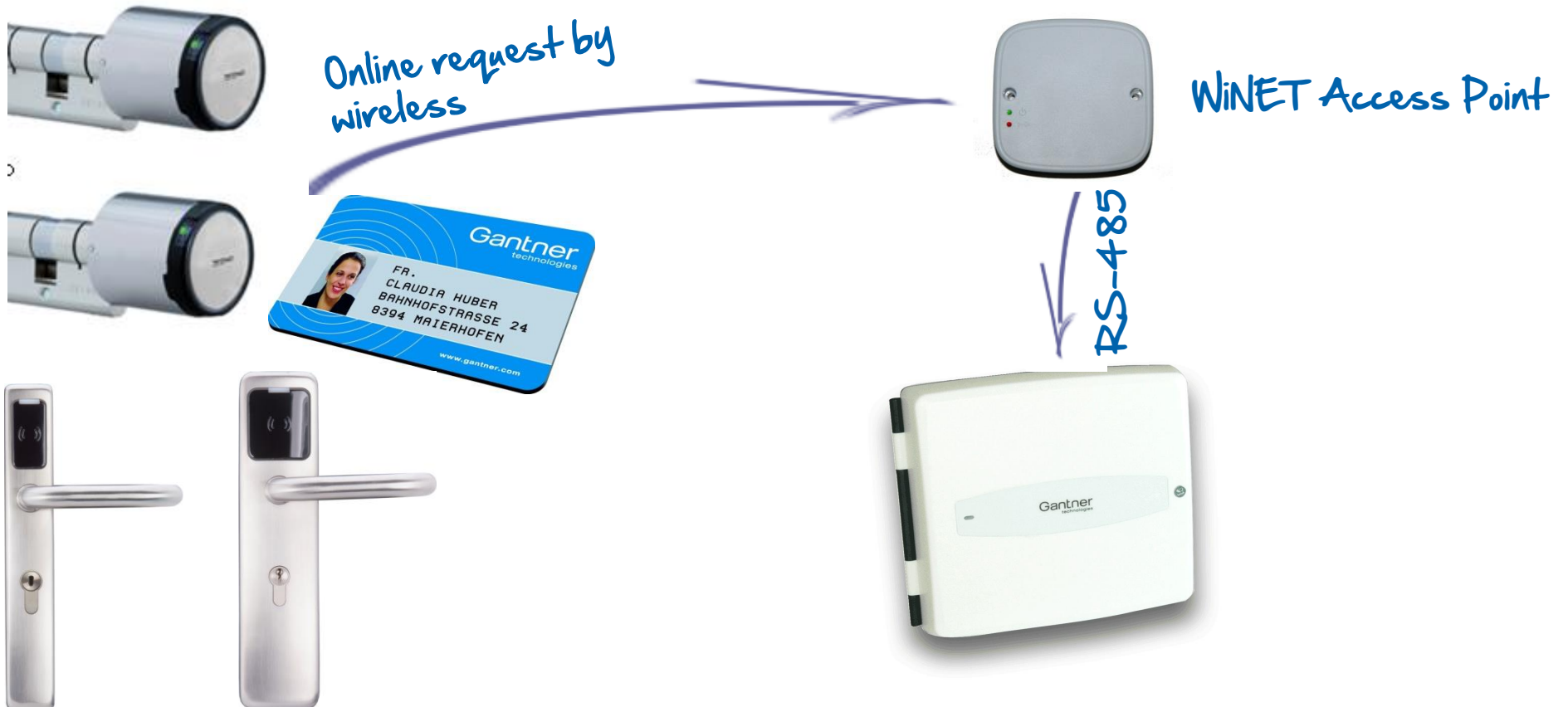
## Inner Doors - Operation





WiNET

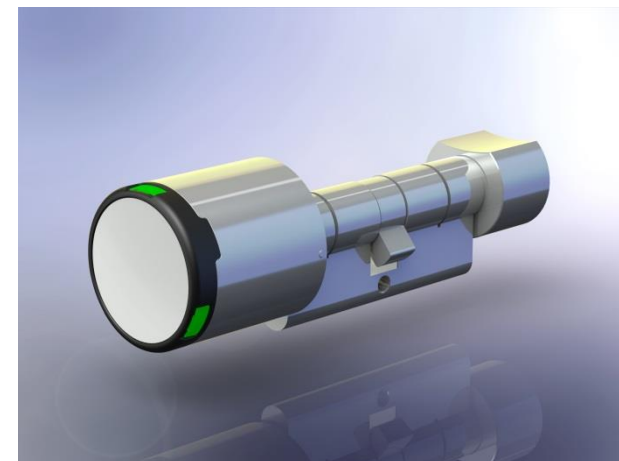
## Network via WIFI



## GAT DL 320

### Electronic door knob cylinder

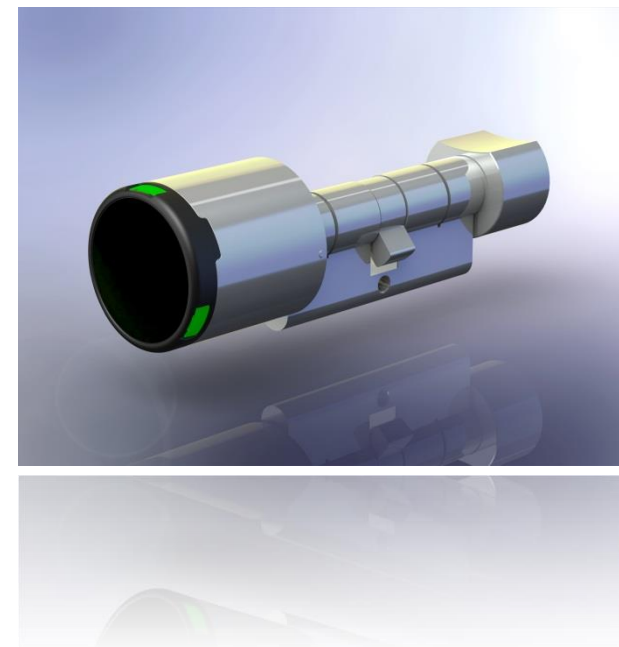
- ▶ Impressive flexibility by modular design
- ▶ Easier installation than for other door knob cylinders
- ▶ One-sided or double-sided identification possible
- ▶ Useable as half cylinder
- ▶ Also available as Swiss round cylinder
- ▶ Also available as anti-panic cylinder
- ▶ Dismounting without tools, possible only with credentials
- ▶ Automatic activation when approached or by turning the door knob
- ▶ Fast and safe battery replacement



## GAT DL 320 / 325

### Electronic door knob cylinder

- ▶ Suitable for indoor and outdoor applications
- ▶ Temperature range -20 to 65°C
- ▶ Protection class IP 65/ IP 66
- ▶ Radio networking 868 MHz
- ▶ Power supply 2 CR2 batteries, emergency power supply possible
- ▶ Door knob diameter 40 mm
- ▶ PZ cylinder from 26/26 mm, inner and outer lengths from 30 to 70 mm, selectable in increments of 5 mm, special lengths from 75 mm possible
- ▶ RZ cylinder from 32/32 mm, inner and outer lengths freely selectable in increments of 5mm, special lengths from 72 mm possible
- ▶ Half cylinder available as PZ and RZ cylinder



## GAT DL 370

### Electronic door fitting

- ▶ Existing locks can be used
- ▶ Standard version with 72 and 88 mm profile cylinder or 78 mm round cylinder
- ▶ Sturdy high-grade steel housing
- ▶ Slim design with a width of 45 mm
- ▶ Adaptation for doors hinged on the L.H. or R.H. side on site
- ▶ Standard batteries can be used (4 units, size AAA)
- ▶ Battery replacement easy from inside
- ▶ Temperature range from -20 to 60°C
- ▶ Protection class IP 54





## Software



Recording of master data

Open interfaces

Organise parking spaces

Administer keys

Property overview

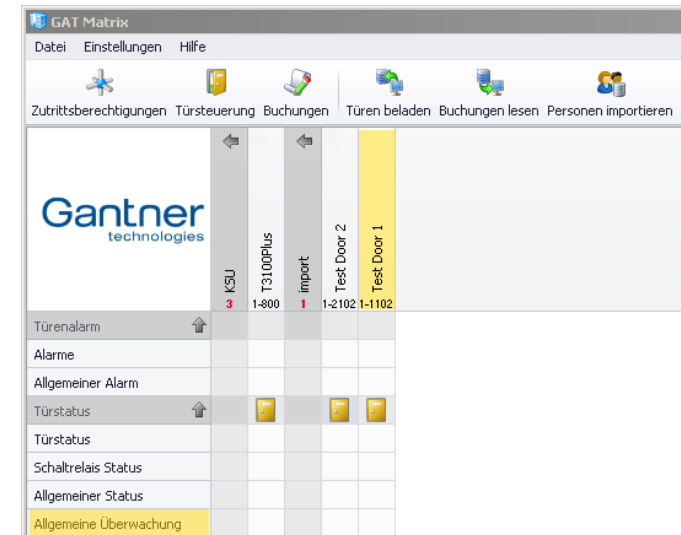
Visualise building

Suitable for emergency exit routes

## Software

### GAT Door Management

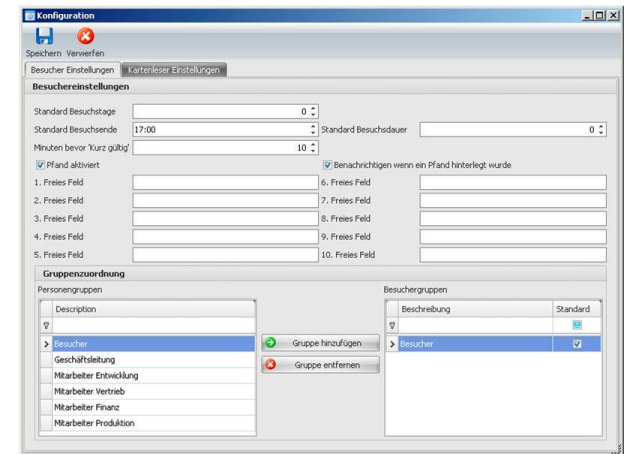
- ▶ Module for door monitoring and control in GAT Matrix
- ▶ Remote opening of doors
- ▶ Alarm treatment and resetting
- ▶ Door status visualisation
- ▶ Alarm system status visualisation



## Software

### GAT Visitor Plugin

- ▶ **Module for visitor administration in GAT Matrix**
- ▶ **Visitor recording and credentials**
- ▶ **Warning prior to the lapsing of the visitor credentials**
- ▶ **Check-out with restitution of the pledge when the visitor leaves**
- ▶ **Client-specific expansion via additional information freely configurable**
- ▶ **Convenient hand-out and return of cards using a card reader**
- ▶ **Visitor guidance via predefined credentials**
- ▶ **Journal providing information on visits**



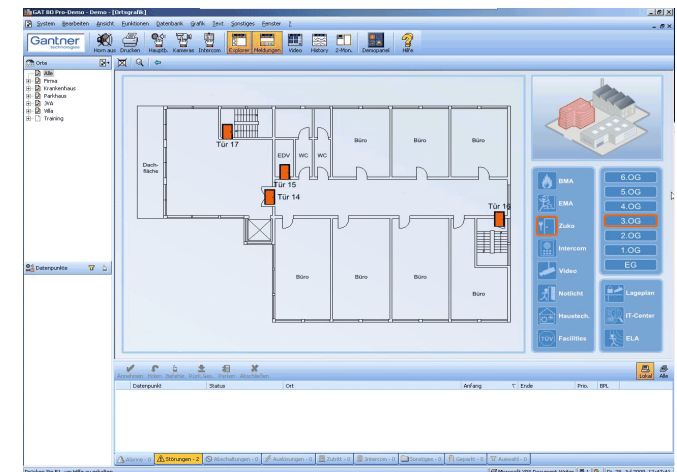
© GANTNER Electronic GmbH

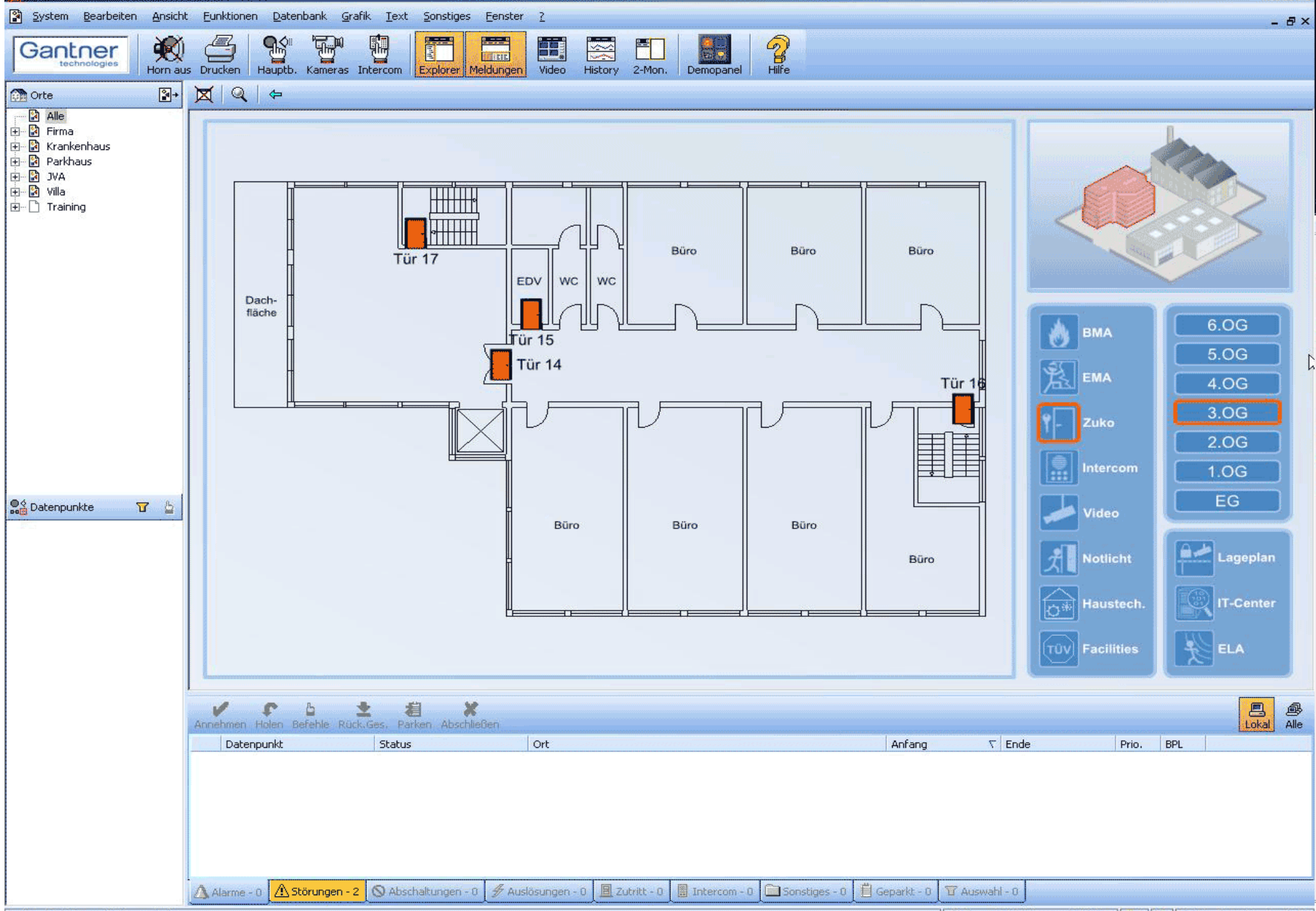


## Software

### GAT Building Overview PRO

- ▶ Door visualisation and control
- ▶ Possible expansion for video, alarm, etc.
- ▶ Free configuration of graphs and layouts
- ▶ Configurable user credentials
- ▶ Message and alarm list with logging
- ▶ Display of information regarding the measures to be taken in the event of an alarm
- ▶ Operator stations with several monitors possible
- ▶ Multisite capability
- ▶ Multiple languages





## Time & Attendance - Operation



## Standard Configuration

**Time recording server**



**TCP/IP Ethernet**



**Time recording operator station**

## Time & Attendance

### **GAT p.time ST380**

- ▶ Recording of present and absent times
- ▶ 5.7" colour touch screen display for easy operation
- ▶ 4 functional keys for frequently used functions
- ▶ Clear user guidance
- ▶ Multi-technology reader for LEGIC, Mifare, ISO 15693 and HUD iClass





## Time & Attendance

### GAT p.time ST380

- ▶ **Host interfaces:**
  - Ethernet (DHCP or a set IP address)
  - RS-485
  - RS-232
  - WLAN with optional adapter
  - GSM/GPRS with optional modem
- ▶ **Peripheral interfaces:**
  - RS-232 for bar code
  - USB for memory stick
- ▶ **Inputs and outputs:**
  - 2 relays
  - 2 optocoupler inputs



## Time & Attendance

### GAT p.time ST 381

- ▶ Flush mounted terminal for time recording
- ▶ Same functions as GAT p.time ST 380
- ▶ Touch screen operation only (no fixed keys)
- ▶ Front aluminium cover or, at additional costs, in chrome steel design
- ▶ Suited for installation in wood, drywall, metal, plastic, etc.
- ▶ Flush box available as accessory for installation in brickwork
- ▶ Individual frame design



# Electronic Locker Locking Systems



**Centrally  
managed and organised**

**No keys to lose,  
No keys to manage**

**Logged locker use**

**Inexpensive retrofitting**

**Flexible in use:  
one or more users,  
time-controlled, rental function**

**Maximum security,  
alarmed**



# Locker Locking Systems



## Locker Locking Systems

### **GAT NET.Lock 7000**

- ▶ For networked locker locking systems
- ▶ Easy operation
- ▶ Free or personal locker selection
- ▶ Status display
- ▶ Monitoring
- ▶ Burglary alarm







# Cashless Payment



**Pay without cash at tills  
and vending machines**

**No cash to handle**

**Faster payments**

**Organise your company's  
social benefits**

**Improve staff  
deployment**

**Create reports  
and statistics**

## Cashless Payment



## Cashless Payment

### Module for Automaton - GAT Vending

- ▶ Cashless payment module for vending machines
- ▶ Can be combined with coin and banknote verifiers
- ▶ Easy mounting
- ▶ Front installation housing
- ▶ Available also without display





## Cashless Payment

### Table reader unit - GAT Writer 5300

- ▶ Table unit for connection to a cashier system or for topping-up and debiting
- ▶ Integrated antenna
- ▶ Optical and acoustic signalling





## References



*FitnessFirst*



body + soul  
celebrate yourself



## References





Thank you for  
your attention!